



# HoundHunter™ SD-3200 Operating Guide

**Please read this entire guide before beginning**



Thank you for choosing SportDOG Brand™. Used properly, this product will help you train your dog efficiently and safely. To ensure your satisfaction, please review this owner's manual thoroughly. If you have questions regarding this product's operation, please see this manual's Frequently Asked Questions or Troubleshooting section, contact our Customer Care Center at 1-800-732-0144, or visit our website at [www.sportdogbrand.com](http://www.sportdogbrand.com).

---

## Table of Contents

Components .....	3
How the System Works .....	3
Key Definitions .....	4
Prepare the Remote Transmitter.....	5
Prepare the Collar Receiver.....	6
Fit the Collar Receiver.....	8
Find the Best Intensity Level for Your Dog .....	8
Program the Remote Transmitter .....	10
Reset the Collar Receiver .....	11
Program the Collar Receiver for Two-Dog Operation (Mode 2).....	11
Program the Collar Receiver for Up to Four-Dog Operation (Mode 1) .....	12
Frequently Asked Questions .....	13
Troubleshooting.....	14
Test Light Instructions .....	15
Terms of Use and Limitation of Liability.....	15
SportDOG Add-A-Dog™ Receivers.....	16

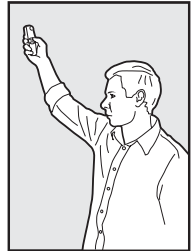
# Components



## How the System Works

The SportDOG HoundHunter™ 3200 has been proven safe, comfortable and effective for all dogs over 8 pounds. Consistent, correct use of this product allows you to reinforce commands and correct misbehavior from up to 2 miles. The Remote Transmitter sends a signal, activating the Collar Receiver to deliver a harmless stimulation. With proper training, a dog will learn to associate this signal with a command. Like all SportDOG products, this model features adjustable stimulation levels so you can tailor the stimulation level to your dog's temperament, eliminating the risk of over-correction.

**Important: The HoundHunter 3200 has a range of up to 2 miles. Depending on the way you hold the Remote Transmitter, the maximum range may vary. For consistent results at longer ranges, hold the Remote Transmitter in a vertical position away from your body and above your head. Terrain, weather, vegetation, transmission from other radio devices, and other factors will affect the maximum range.**



# Key Definitions

**Remote Transmitter:** Transmits the radio signal to the Collar Receiver. It is waterproof and can be submerged in water.

**Intensity Dial:** Provides multiple levels of stimulation so you can match the correction to your dog's temperament.

**Transmitter Indicator Light:** Indicates that a button is pressed and also serves as a low battery indicator.

**Toggle Switch:** This switch is factory-set so that the Remote Transmitter can control up to four Collar Receivers.

**Upper Button:** This button is factory-set to deliver Continuous Stimulation to Dogs 1 and 3.

**Lower Button:** This button is factory-set to deliver Continuous Stimulation to Dogs 2 and 4.

**Collar Receiver:** Receives the radio signal from the Remote Transmitter. It is waterproof and can be submerged in water.

**Receiver Indicator Light:** Indicates when the Collar Receiver has been turned on or off and also serves as a low battery indicator.

**Contact Points:** The contacts through which the Collar Receiver delivers stimulation when the Remote Transmitter upper or lower button is pressed.

**On/Off Button:** Momentarily pressing and holding this button turns the Collar Receiver on and off.

**Charging Jacks:** For connecting the charger. Although the Collar Receiver is waterproof without it, keep the cover in place when not charging to keep debris out of the opening.

**Continuous Stimulation:** When a button is programmed for Continuous Stimulation, you control both when and how long stimulation is delivered to your dog through the Collar Receiver's Contact Points. When a Continuous Stimulation button is pressed for 8 seconds or more, the Remote Transmitter will "time-out." The button will need to be released and pressed again before additional stimulation can be delivered.

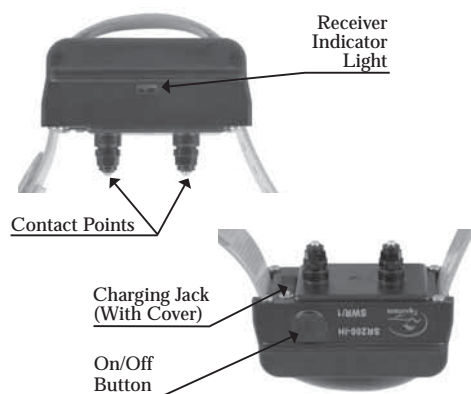
**Momentary (Nick) Stimulation:** When a button is programmed for Momentary Stimulation, stimulation is delivered for 5/100 of a second, regardless of how long the button is pressed.

**GlowGrip™:** Glow-in-the-dark transmitter panels.

## Remote Transmitter



## Collar Receiver



# Step 1

## Prepare the Remote Transmitter

### Inserting 9-Volt Battery

1. Remove the panel from the side opposite of the knob and toggle switch. *Note: The screws have been “captured” to allow them to stay in the panel once they have been loosened.*
2. Connect the battery to the 9-volt battery connector.
3. Insert 9-volt battery and secure the panel. *Note: Make sure the wires are in the housing before securing the panel to the case. This will allow the transmitter to be consistently waterproof.*

*Note: Approximate battery life will be 6-12 months, depending upon frequency of use.*



### Transmitter Indicator Light

Remote Transmitter Function	Indicator Light Response
Continuous Stimulation button pressed	Solid in color
Momentary (Nick) Stimulation button pressed	Single flash
Low battery – Continuous Stimulation button pressed	Flashes continuously

## Step 2 Prepare the Collar Receiver

### Charge the Collar Receiver

1. Lift the rubber cover protecting the Collar Receiver Charging Jack.
2. Connect the charger connector to the Collar Receiver Charging Jack.
3. Plug the charger into a standard 120-volt AC wall outlet.

4. Charge the Collar Receiver for 24 hours for the first charge. Recharges take only 12 hours.

*Note: The Receiver Indicator Light will flash after 12 hours of charging.*

*For the first charge, continue to charge the Collar Receiver for an additional 12 hours.*

5. When charging is completed, replace the rubber cover.

Charger connector placed in Collar Receiver Charging Jack



If the Collar Receiver is used in or around salt water, the Collar Receiver should be rinsed with fresh water following each use. Prior to rinsing, the power cover should be removed from the power plug socket and left out until the Collar Receiver has air dried.

### To Turn the Collar Receiver On:

1. Press and hold the On/Off Button until the Receiver Indicator Light comes on and the Collar Receiver beeps 5 times.
2. Release the On/Off Button.

The Receiver Indicator Light will flash until the Collar Receiver is turned off. The flashing light indicates the Collar Receiver is ready to receive a radio signal from the Remote Transmitter.



On/Off Button

### To Turn the Collar Receiver Off:

1. Press and hold the On/Off Button until the Receiver Indicator Light comes on and the Collar Receiver beeps 2 times.
2. Release the On/Off Button.

To extend the life between charging cycles, turn the Collar Receiver off when it is not in use. Approximate battery life between charges is 40 to 80 hours, depending on frequency of use.

## Receiver Indicator Light

Function	Indicator Light Response
Collar Receiver on – good battery	Flashes once per second
Collar Receiver on - low battery	Flashes once every 4 seconds
Continuous Stimulation button pressed	Solid in color
Momentary (Nick) Stimulation button pressed	Single flash

## Rechargeable Batteries

- The rechargeable Nickel Metal Hydride (NiMH) batteries are not memory sensitive and do not require depletion before charging.
- The batteries come partially charged from the factory, but will require a full charge (24 hours) before the first use.
- Remember - Always keep batteries away from flame.
- When storing the unit for long periods, remember to regularly give batteries a full charge (12 hours). This should be done once every 4 to 6 weeks.
- Excessive overcharging can shorten battery life. After initial charge, never leave the battery plugged in for more than 12 hours.
- If your equipment has not been charged for an extended period, you may experience a decrease in battery life the first few uses. Afterwards, the battery life will return to previous capacity levels.
- You should expect hundreds of recharge cycles from your batteries. However, all rechargeable batteries lose capacity over time relative to the number of recharge cycles they experience. This is normal. If your operating time drops to half of the original life, contact the Customer Care Center to purchase a new battery.
- The batteries should last for a period of 3-5 years. When a battery needs replacement, you can order a new pack by calling our Customer Care Center at 1-800-732-0144. Please do not open the Collar Receiver or Remote Transmitter until you have received the replacement.

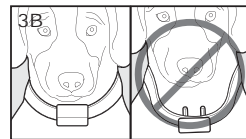
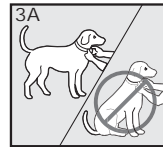
## Step 3 Fit the Collar Receiver

# 3

**Important: The proper fit and placement of the Collar Receiver is important for effective training. The Contact Points must have direct contact with your dog's skin.**

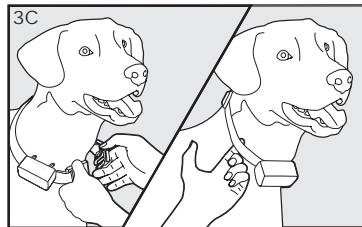
To ensure a proper fit, follow these steps:

1. With your dog standing (3A), center the Collar Receiver where the Contact Points are underneath your dog's neck, touching the skin (3B). If your dog has a long or thick coat, trim the hair around the Contact Points to ensure consistent contact.
2. The Collar Receiver should fit snugly, yet loose enough to allow one finger to fit between the strap and your dog's neck (3C).
3. Allow your dog to wear the collar for several minutes, and then recheck the fit. Check the fit again as your dog becomes more comfortable wearing the Collar Receiver.



### Care and Cleaning

To ensure the effectiveness of this product and the comfort and safety of your dog, check the fit of his collar frequently. This Guide describes proper collar fitting. If you notice that your dog is experiencing skin irritation, discontinue use of the collar for a few days. If the condition persists beyond 48 hours, see your veterinarian.



### To prevent skin irritation from occurring:

- The Collar Receiver should not be worn for more than 8 hours out of every 24-hour period.
- Your dog's neck and the Contact Points must be washed weekly with a washcloth and mild hand soap, then rinsed thoroughly.

## Step 4 Find the Best Intensity Level for Your Dog

# 4

The HoundHunter 3200 has multiple intensity levels. This allows you to choose the stimulation that is best for your dog.

*Note: Always start at the lowest level and work your way up.*

For training efficiency, it is important to find the right intensity level for your dog. This is called the Recognition Level, at which your dog swallows, looks around in curiosity, or flicks his ears.



## **Finding Your Dog's Recognition Level:**

*Note: Every dog is different and you cannot predict where your dog's Recognition Level will be. Watch closely for any slight change in behavior that tells you your dog is feeling the stimulation.*

1. With the Collar Receiver turned on and properly fitted to your dog, set the Remote Transmitter's Intensity Dial at Level 1 and press the Continuous Stimulation Button for 1 to 2 seconds.
2. If your dog shows no reaction to Level 1, go to Level 2 and repeat the process.
3. YOUR DOG SHOULD NOT VOCALIZE OR PANIC WHEN RECEIVING STIMULATION. IF THIS HAPPENS, THE STIMULATION LEVEL IS TOO HIGH AND YOU NEED TO GO BACK TO THE PREVIOUS LEVEL AND REPEAT THE PROCESS.
4. Once you find your dog's Recognition Level, this is the level you should use when you begin a training exercise.
5. If you have progressed to Level 8 while searching for your dog's Recognition Level and your dog continues to show no response, check to see if Collar Receiver is snug against your dog's neck. Then go back to Intensity Level 1 and repeat the process. If your dog still does not indicate he is feeling the stimulation, you may have to trim the hair beneath the Contact Points.

If after completing all of these steps your dog still does not indicate he is feeling the stimulation, please contact Customer Care Center at 1-800-732-0144.

## **General Training Tips**

Now you are ready to use the HoundHunter 3200 and begin training your dog. Please keep the following training tips in mind.

- Eliminate one misbehavior or teach one obedience command at a time. If you move too fast with the training, your dog may become confused.
- Be consistent. Give your dog a stimulation with each misbehavior.
- Do not overcorrect your dog. Use as few stimulations as possible to train your dog.
- Restrict your dog from situations in which he has a history of misbehaving unless you can supervise him and use the HoundHunter 3200 for applying stimulation.
- If you notice one situation in which your dog misbehaves repeatedly, set up this situation as a training session. This will dramatically increase your chances of success.
- If your dog has a timid reaction to the stimulation (especially the first couple of times), do not be alarmed. Redirect his attention to a simple and appropriate behavior (i.e. a known command, such as "Sit").
- Never use the HoundHunter 3200 to correct or eliminate any form of aggressive behavior. If your dog exhibits such behavior, contact a professional trainer. Aggression in dogs is the result of many factors – it may be a learned behavior or it may be brought on as a result of fear. Another factor contributing to aggression in dogs is social dominance. Every dog is different.

# Step 5

## Program the Remote Transmitter

*Note: The Transmitter is factory set to Mode 1. The Mode of the Remote Transmitter can be changed to fit your type or style of training.*

### To change the mode:

1. Referring to the table below, adjust the Intensity Dial to the Mode you want to use.
2. Following the same instructions for replacing/ inserting the battery, remove the panel from the opposite side of the knob and toggle switch.
3. Depress and release the Mode button. When the Mode button is pressed, the Transmitter Indicator Light will be solid in color. When it is released, it will flash the Mode selected.

For example, if Mode 2 is desired, adjust the Intensity Dial to Level 2. Once the Mode button has been depressed, the Transmitter Indicator Light will be solid, and once the Mode button is released, the Transmitter Indicator Light will flash 2 times.

*Note: Continuous Stimulation will transmit for no more than eight continuous seconds no matter how long the button is pressed. To reactivate, release and repress the button.*



MODE	UPPER BUTTON FUNCTION	LOWER BUTTON FUNCTION	TOGGLE SWITCH (LEFT/RIGHT)	# OF DOGS
1	Continuous Stimulation with intensity level set by Intensity Dial - Dog 1 or 3	Continuous Stimulation with intensity level set by Intensity Dial - Dog 2 or 4	Dog 1-2/ Dog 3-4	1-4
2	Continuous Stimulation with intensity level set by Intensity Dial	Momentary (Nick) Stimulation with intensity level set by Intensity Dial	Dog 1/ Dog 2	1-2

## Step 6 Reset the Collar Receiver

6

To reset the Collar Receiver to work with a new Remote Transmitter or to reprogram a new Collar Receiver to work with your existing Remote Transmitter:

- A.** Turn the Collar Receiver off.
- B.** Press and hold the On/Off Button. The Receiver Indicator Light will come on, then turn off after 4-5 seconds. If the On/Off Button is released too early, the Receiver Indicator Light will begin flashing as normal. If this occurs, start over from **A.**
- C.** After the Receiver Indicator Light has turned off, release the On/Off Button.
- D.** Press and hold the Upper Button on the Remote Transmitter until the Receiver Indicator Light flashes 5 times. You may need to hold both units 2-3 feet from each other before this occurs. Once the Receiver Indicator Light has flashed 5 times, the Collar Receiver has been reset and will begin flashing as normal. If the Receiver Indicator Light does not flash 5 times, start over and repeat the process.

## Step 7 Program the Collar Receiver for Two-Dog Operation (Mode 2)

7

SportDOG Collar Receivers can be set to respond to either the left or right toggle switch position. A SportDOG Add-A-Dog™ receiver must be purchased to train a second dog in two-dog mode.

1. Program the Remote Transmitter to mode 2 (see page 10).
2. Flip the toggle switch to the left position to program the first Collar Receiver.
  - A.** Turn the Collar Receiver off.
  - B.** Press and hold the On/Off Button. The Receiver Indicator Light will come on, then turn off in 4-5 seconds. If the On/Off Button is released too early, the Receiver Indicator Light will begin its normal flashing. If this occurs, start over and repeat from **A.**
  - C.** After the Receiver Indicator Light has turned off, release the On/Off Button.
  - D.** Press and hold the Upper Button on the Remote Transmitter until the Receiver Indicator Light flashes 5 times. You may need to hold both units 2-3 feet from each other. If the Receiver Indicator Light does not flash 5 times, start over and repeat from **A.**
3. Program the second Collar Receiver the same way using **A.** through **D.** above, but with the toggle switch set to the right position.

Set toggle left for Dog 1  
and right for Dog 2



Step  
8

## Program the Collar Receiver for Up to Four-Dog Operation (Mode 1)

SportDOG Add-A-Dog™ Receivers must be purchased to train additional dogs.

1. Program the Remote Transmitter to Mode 1 (see page 10).
2. Flip the toggle switch to the left position.
3. Program the first Collar Receiver:
  - A. Turn the Collar Receiver off.
  - B. Press and hold the On/Off Button. The Receiver Indicator Light will come on, then turn off in 4-5 seconds. If the On/Off Button is released too early, the Receiver Indicator Light will begin its normal flashing. If this occurs, start over and repeat from A.
  - C. After the Receiver Indicator Light has turned off, release the On/Off Button.
  - D. Press and hold the **Upper Button** on the Remote Transmitter until the Receiver Indicator Light flashes 5 times. You may need to hold both units 2-3 feet from each other. If the Receiver Indicator Light does not flash 5 times, start over and repeat from A.
4. Program the second Collar Receiver using A. through D. above, but using the **Lower Button** in place of the Upper Button.
5. Flip to the toggle switch to the right position.
6. Program the third and fourth Collar Receivers using A. through D. above, for both the **Upper** (Dog 3) and **Lower** (Dog 4) buttons.

# Frequently Asked Questions

<b>Is the stimulation safe for my dog?</b>	While the stimulation is unpleasant, it is harmless to your dog. Electronic training devices require interaction and training from the owner to achieve desired results.
<b>How old does a dog have to be before using the HoundHunter 3200?</b>	Your dog should be able to learn basic obedience commands such as "Sit" or "Stay." The Collar Receiver may be too large for dogs under 8 pounds.
<b>Once my dog is trained and has been obeying my commands, will my dog have to continue to wear the Collar Receiver?</b>	Your dog may need to wear the Collar Receiver from time to time for reinforcement. Also, many hunters keep the Collar Receiver on their dogs while hunting for maximum control.
<b>Is the Collar Receiver waterproof?</b>	Yes. If the rechargeable battery pack ever needs to be replaced, make sure the o-ring and o-ring groove are free from dirt and debris.
<b>Can I use the HoundHunter 3200 with more than one dog?</b>	Yes, SportDOG Add-A-Dog™ Collar Receivers must be purchased. For 3 or 4-dog operation, the Remote Transmitter must be programmed to Mode 1.
<b>Can I use the HoundHunter 3200 on aggressive dogs?</b>	We do not recommend any of our products to be used on aggressive dogs. We recommend you contact your local veterinarian or professional trainer to determine if your dog might be aggressive.
<b>Will I get exactly 2 miles of range with the HoundHunter 3200?</b>	The range you get with your HoundHunter 3200 will vary according to terrain, weather, vegetation, as well as transmission from other radio devices. To get the maximum amount of range, please refer to "How the System Works" section of this guide.
<b>How long can I continuously deliver stimulation to my dog?</b>	The maximum amount of time you can press the Continuous Stimulation Button and deliver stimulation to your dog continuously is 8 seconds. After eight seconds, the Remote Transmitter will time-out, and the Continuous Stimulation Button must be released and pressed again.
<b>What do I do if my dog's neck becomes red and irritated?</b>	This condition is due to the Contact Points irritating the skin. Discontinue use of the Collar Receiver for a few days. If the condition persists beyond 48 hours, see your veterinarian. Once the skin returns to normal, replace Collar Receiver, and monitor the skin condition closely.
<b>Can my Collar Receiver be used around salt water?</b>	If the Collar Receiver is used in or around salt water, the Collar Receiver should be rinsed with fresh water following each use. Prior to rinsing, the power cover should be removed from the power plug socket and left out until the Collar Receiver has air dried.
<b>The Intensity Dial seems difficult to rotate. Is this normal?</b>	Yes. This prevents accidental changes in intensity and encourages an optimal waterproof seal. The dial will "break in" and be slightly easier to turn as you use it.

# Troubleshooting

The answers to these questions should help you solve any problem you have with this system. If they do not, please contact the Customer Care Center at 1-800-732-0144 or visit our website at [www.sportdogbrand.com](http://www.sportdogbrand.com).

**My dog is not responding when I press a button.**

- Check to see if the Collar Receiver has been turned on.
- If your range has reduced from the first time you have used it, please check to see if the battery is low in either the Remote Transmitter or Collar Receiver.
- Many factors can impact the range you have with the HoundHunter 3200. For a list of these factors, please refer to “How the System Works”.
- You can verify the Collar Receiver is delivering stimulation to your dog by placing the test light, enclosed in your kit, on the Collar Receiver. Please refer to the “Test Light Instructions” Section for details.
- Increase the Intensity Dial. Refer to “Find the Best Intensity Level For Your Dog” for more information.
- Make sure the Collar Receiver’s Contact Points are placed snugly against your dog’s skin. Refer to “Fit the Collar Receiver” for more information.
- If you notice your operating time dropping to about half the original time, your Collar Receiver battery needs to be replaced. Contact the Customer Care Center to purchase a new one.

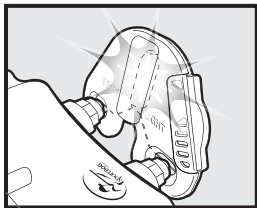
**The Collar Receiver will not turn on.**

- Make sure the Collar Receiver has been charged. For the initial charge, be sure to charge it for 24 hours. Future charges only take 12 hours.

**The Collar Receiver is not responding to the Remote Transmitter.**

- Verify the Collar Receiver has been turned on. Refer to “Turning the Collar Receiver On and Off”.
- Refer to “Reset the Collar Receiver.”

# Test Light Instructions



1. Hold the Test Light Contacts to the Contact Points.
2. Press a Stimulation Button on the Remote Transmitter.
3. The Test Light will flash.

*Note: At higher Intensity Levels the Test Light will flash brighter.*  
Save the Test Light for future testing.

*Note: If the Test Light does not flash, recharge the battery and re-test. If Test Light still does not flash, contact the Customer Care Center at 1-800-732-0144.*

## Terms of Use and Limitation of Liability

### 1. Terms of Use

This Product is offered to you conditioned upon your acceptance without modification of the terms, conditions and notices contained herein. Usage of this product implies acceptance of all such terms, conditions, and notices.

### 2. Proper Use

This Product is designed for use with pets where training is desired. The specific temperament of your pet may not work with this product. We recommend that you not use this product if your pet is less than 8 pounds or if your pet is aggressive. If you are unsure whether this is appropriate for your pet, please consult your veterinarian, certified trainer or contact our Customer Care Center at 1-800-732-0144.

Proper use includes reviewing the entire Operating and Training Guide provided with your product and any specific Caution statements.

### 3. No Unlawful or Prohibited Use

This Product is designed for use with pets only. This pet training device is not intended to harm, injure, or provoke. Using this product in a way that is not intended could result in violation of Federal, State or local laws.

### 4. Limitation of Liability

In no event shall Radio Systems Corporation be liable for any direct, indirect, punitive, incidental, special or consequential damages, or any damages whatsoever arising out of or connected with the use or misuse of this Product. Buyer assumes all risks and liability from the use of this Product.

### 5. Modification of Terms and Conditions

Radio Systems Corporation reserves the right to change the terms, conditions and notices under which this Product is offered.

# FCC COMPLIANCE

This equipment has been tested and found to comply with the limits for a Class B digital device, pursuant to Part 15 of the FCC rules. Unauthorized changes or modifications to the equipment that are not approved by Radio Systems Corporation are in violation of FCC regulations and could void the user's authority to operate the equipment and void the warranty.

## SportDOG Add-A-Dog™ Receivers

*Note: The HoundHunter™ Transmitter can be used with any SportDOG Add-A-Dog™ Receiver.*

<b>Description</b>	<b>Part Number</b>
FieldTrainer Add-A-Dog - Standard Power	SDR-FS
FieldTrainer Add-A-Dog - High Power	SDR-FH
SportHunter Add-A-Dog - Standard Power	SDR
WetlandHunter Add-A-Dog - High Power	SDR-CH
HoundHunter Add-A-Dog - High Power	SDRH

Radio Systems Corporation  
10427 Electric Avenue  
Knoxville, TN 37932  
1-800-732-0144  
[www.sportdogbrand.com](http://www.sportdogbrand.com)  
400-729